

Title Document name	Status Public	Page (Pages) 1 (9)
Author PA Nilsson	Revision 1.0	Date 2017-12-21

KEEP Hard Disk Installation



Title Document name	Status Public	Page (Pages) 2 (9)
Author PA Nilsson	Revision 1.0	Date 2017-12-21

Table of Contents

1 Abstract.....	3
2 Required tools.....	4
3 Package Content.....	4
4 Good to know.....	4
5 Installation Process.....	5

Title Document name	Status Public	Page (Pages) 3 (9)
Author PA Nilsson	Revision 1.0	Date 2017-12-21

1 Abstract

This document describes how to install a hard drive into KEEP

Title Document name	Status Public	Page (Pages) 4 (9)
Author PA Nilsson	Revision 1.0	Date 2017-12-21

2 Required tools

The following tools are required to properly mount a hard disk in KEEP.

- T10 screwdriver (torx)
- Pozi Nbr 1 screwdriver (PZ1)

3 Package Content

- KEEP
- Optional Power supply
- Network cable

For kits supplied without a hard-drive

- Small plastic bag with two black screws and two nylon washers

4 Good to know

The **disk** shall be installed on the **top side** of the board, and attached with screws from the bottom.



Title Document name	Status Public	Page (Pages) 5 (9)
Author PA Nilsson	Revision 1.0	Date 2017-12-21

5 Installation Process

- i. Start by grounding yourself by touching a radiator or other grounded surface to discharge any built up electro-static charge.
- ii. Remove the four T10 screws from the bottom of KEEP

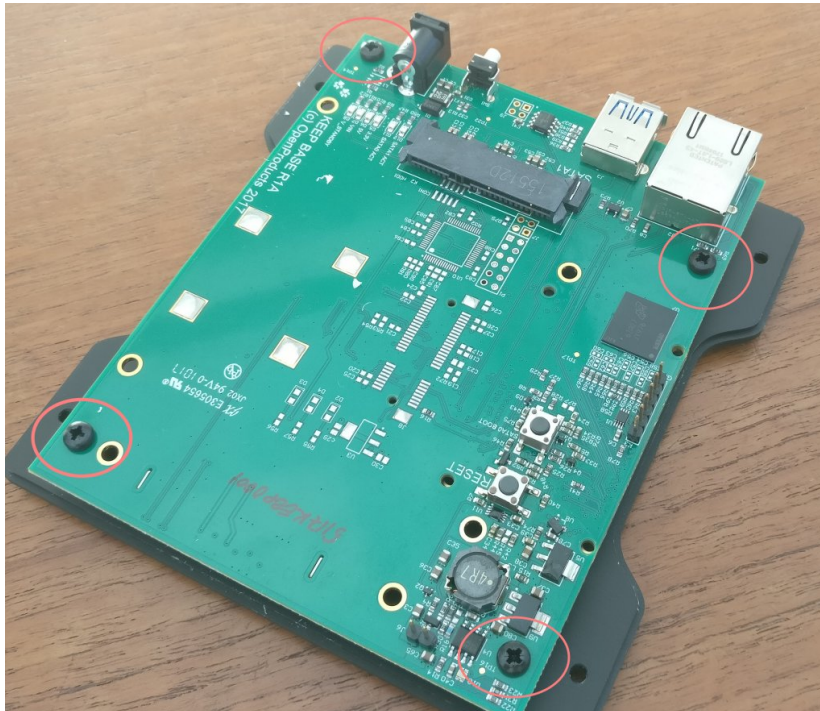


- iii. Flip the unit and remove the white cover by lifting the front and slide it off the connectors



Title	Status	Page (Pages)
Document name	Public	6 (9)
Author	Revision	Date
PA Nilsson	1.0	2017-12-21

- iv. Remove the four black screws using a PZ1 screwdriver



- v. Lift the Printed Circuit Board by the edges of the board. Be careful to use the edges in order not to damage any on-board circuits.
- vi. Place the disk on some kind of spacer, like a matchbox to make the alignment easier.

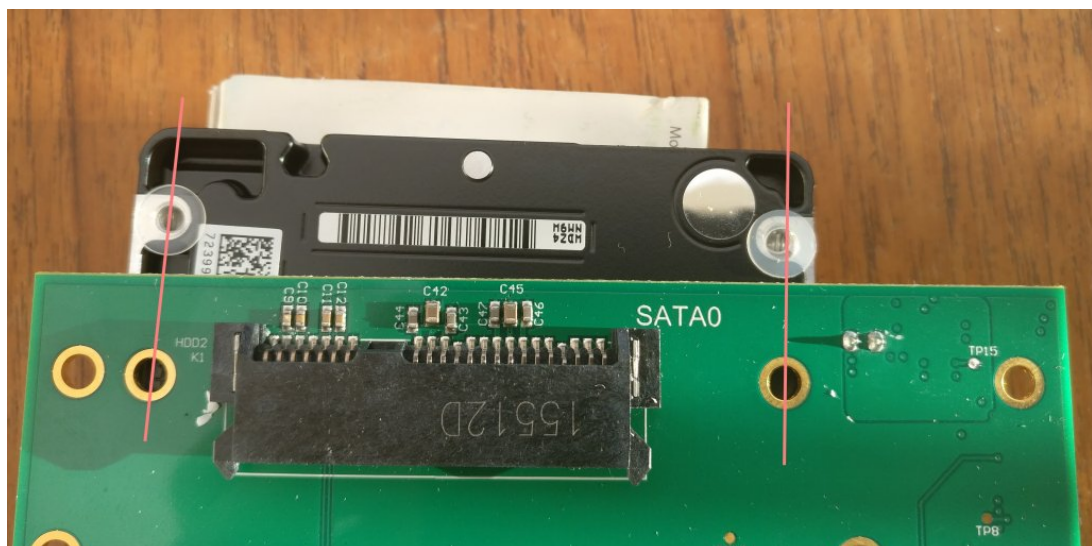


Title Document name	Status Public	Page (Pages) 7 (9)
Author PA Nilsson	Revision 1.0	Date 2017-12-21

vii. Place the nylon washers on the disk

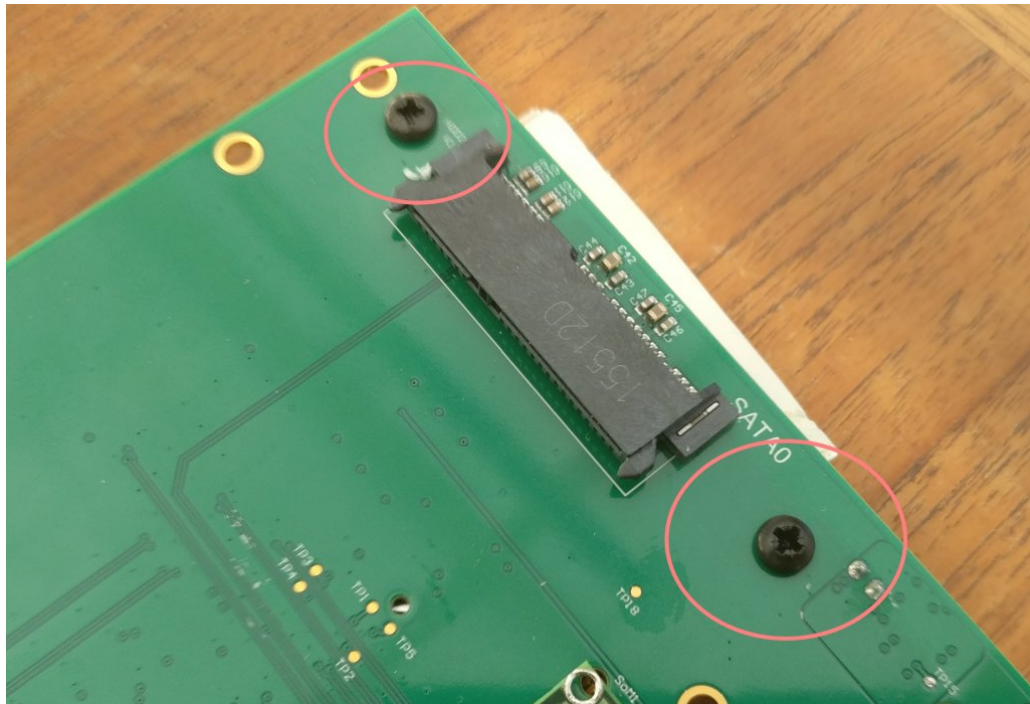


viii. Turn the board over and align the holes in the disk with the holes in the board. Slide the hard drive carefully in place on the top of the board, making sure the washers stay in place.

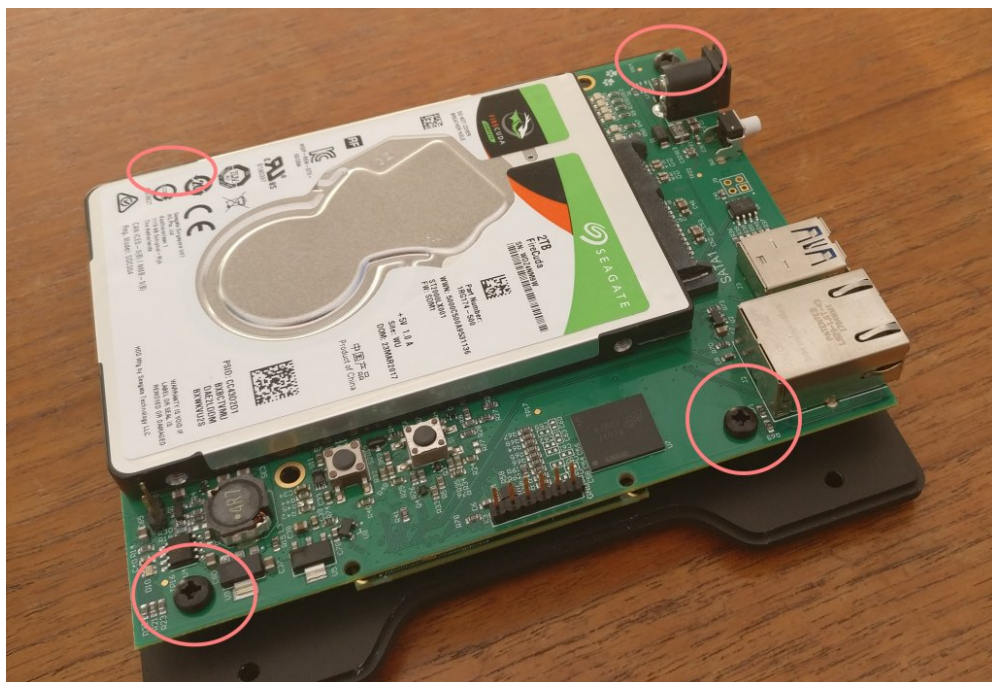


Title Document name	Status Public	Page (Pages) 8 (9)
Author PA Nilsson	Revision 1.0	Date 2017-12-21

ix. Using the two black screws from the plastic bag, fixate the drive.

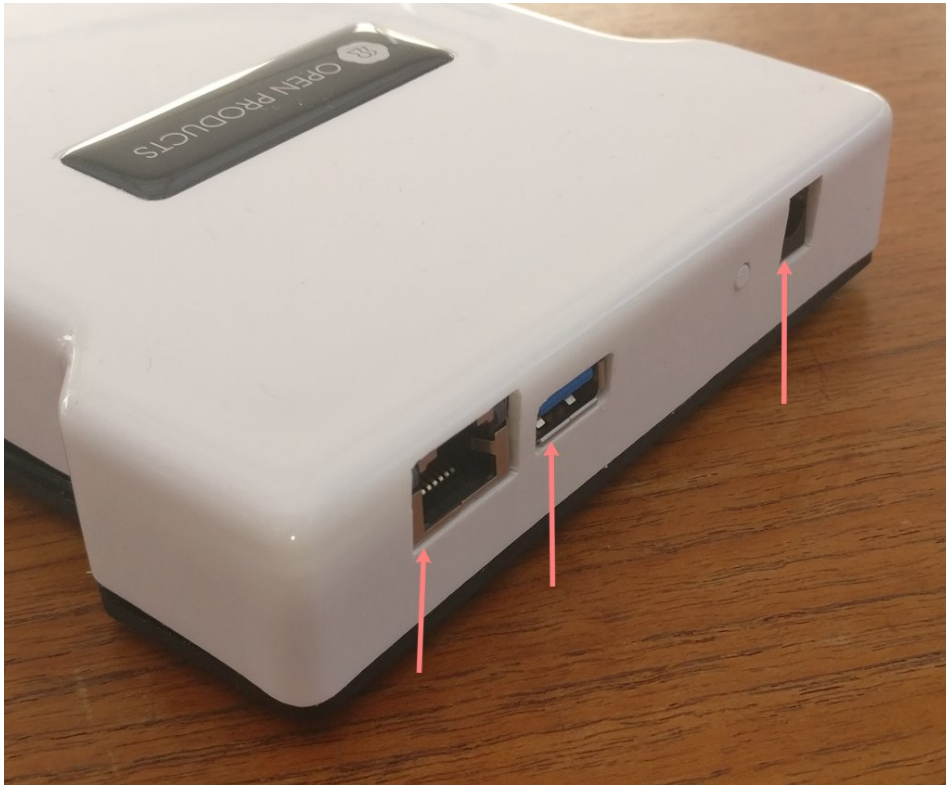


x. Flip the board back over, place it back on the bottom part and attach the four black screws.



Title Document name	Status Public	Page (Pages) 9 (9)
Author PA Nilsson	Revision 1.0	Date 2017-12-21

- xi. Slide the white cover over the connectors and down over the front of the disk. The cover is fairly tight passing the disk, so make sure the connectors are fitted correctly in their holes in the cover. Also, the cover might need a bit of help passing over the edge of the drive.



- xii. Make sure that the cover “snaps” over the small edge of the bottom plate. Do not be afraid to put some pressure on the cover at this point.
- xiii. Flip the unit over and put the four T10 screws back in place.